

SHARP®

SHARP AR-163 IMAGER. ADVANCED DIGITAL DOCUMENT SYSTEM

HIGH RESOLUTION

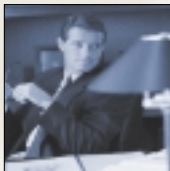
1200 DPI-QUALITY/PCL6

HIGH SPEED

SUPER G3

33.6 KBPS FAX OPTION

NETWORK PRINTER OPTION



16 PAGE PER MINUTE

DIGITAL COPIER WITH
600 DPI OUTPUT

PRODUCTIVE SCAN ONCE,
PRINT MANY CAPABILITY

WIDE RANGE OF PAPER
SIZES INCLUDING 11" X 17"

COPY, PRINT, FAX ... THREE SOLUTIONS IN ONE RELIABLE SYSTEM.

The Sharp **AR-163** Digital IMAGER offers state-of-the-art, integrated office technology with three smart solutions in one – crisp digital copying with scan once – print many capability, advanced printing, and high-speed faxing. Taking advantage of the cost-efficient conventional supply system (separate toner, developer, and drum), the **AR-163** IMAGER can reduce your total cost of ownership.

The versatile digital copier includes advanced features like standard **Auto Image Rotation Copy, Offset Stacking, Electronic Sorting Upgrade**, and an optional Job Separation Tray. When you're ready for more, the **AR-163** IMAGER can become a powerful high resolution 1200 dpi-quality network printer offering a wide range of paper sizes including 11" x 17". Use the optional **Network Interface Card** to maximize the efficiency and productivity of your workgroup – delivering a range of output options right from your desktop. Plus, the optional **Fax Expansion Kit** turns the **AR-163** IMAGER into a Super G3 plain-paper laser fax, with a 3 second per page transmission and 33.6 modem speed.

The Sharp **AR-163** Digital IMAGER is the all-in-one solution for any growing business looking for a competitive advantage.

Digital
IMAGER™
Advanced Document System

AR-163

AR-163

SPECIFICATIONS

COPIER SPECIFICATIONS

TYPE	Digital copying machine, desktop
COPY SYSTEM	Dry electrostatic transfer system
ORIGINALS	Sheets, bound documents
ORIGINAL SIZE (MAX)	11" x 17"
COPY SIZE (MIN/MAX)	Min. 5 1/2" x 8 1/2", Max. 11" x 17"
COPYING SPEED	16 copies per minute (8 1/2" x 11") 12 copies per minute (8 1/2" x 11"R) 10 copies per minute (8 1/2" x 14") 9 copies per minute (11" x 17")
PRINT SPEED	16 pages per minute
CONTINUOUS COPY	Max. 99 copies, subtractive counter
FIRST COPY OUT TIME	7.2 seconds
WARM UP TIME	35 seconds
COPY RATIO	Variable: 50 - 200% in 1% increments Fixed presets: 50%, 64%, 77%, 95%, 100%, 121%, 129%, 141%, 200%
EXPOSURE SYSTEM	Moving optical source, slit exposure (stationary platen) with automatic exposure function
COPY PAPER FEED	1 paper tray with auto paper feed (250 sheets); 1 manual feed tray with 100 sheet automatic feed capacity
ORIGINAL FEED SYSTEM	30 Sheet Single Pass Feeder (SPF) (option)

FINISHING CAPABILITY	Offset stacking
FUSING SYSTEM	Heat rollers
DEVELOPER SYSTEM	Magnetic brush development
LIGHT SOURCE	Xenon lamp
COPY RESOLUTION	Scan: 400 dpi/ Output: 600 dpi
GRADATION	256 levels
REQUIRED POWER SUPPLY	AC 120V, 60 Hz, 12 amps
POWER CONSUMPTION	Max. 1.3 kW
WEIGHT	Approx. 69.9 lbs.
DIMENSIONS	23.3" (w) x 21" (d) x 18.5" (h)
OPERATING CONDITIONS	Temperature: 59°F to 86°F (15°C to 30°C) Humidity: 20% to 85%

OPTIONAL EQUIPMENT

Single Pass Feeder (AR-SP2)
Electronic Sorting Kit (AR-EB3)
250-Sheet Paper Feed Unit (AR-DE5)
500-Sheet Paper Feed Unit (AR-DE6)
Facsimile Expansion Kit (AR-FX2)
Printer Expansion Kit (AR-PB8)
PS2 Expansion Kit (AR-PS1)
Network Interface Card (AR-NC3D)
LCD Panel Kit (AR-PA1)
Job Separator Tray (AR-TR2)

OPTIONAL PRINT KIT SPECIFICATIONS

DESCRIPTION

PRINT KIT	AR-PB8 AR-PS1 (PostScript Expansion Kit)
RESOLUTION	1200 dpi equivalent with smoothing technology
COMPUTER INTERFACE	IEEE 1284 bi-directional parallel port 10/100BaseT with AR-NC3D (option)
PAGE DESCRIPTION LANGUAGE	PCL5e/PCL6 Emulation; PostScript Level 2 Emulation (when optional AR-PS1 is installed)
PRINT DRIVER SUPPORT	Microsoft Windows 3.1/95/98; Macintosh OS 8.5 and above Windows NT 4.0, Windows 2000 (with AR-PS1 option)
RESIDENT FONTS	45 Outlines for PCL6 Emulation; 35 Outlines for PostScript2 Emulation (when optional AR-PS1 is installed)
MEMORY (STD/MAX)	8MB/136MB
MEMORY EXPANSION SLOTS	2 DIMM Slots
EXPANSION MEMORY	PC DIMM

Design and specifications are subject to change without notice.

Sharp is a registered trademark of Sharp Corporation. All trademarks and registered trademarks are the property of their respective holders.

OPTIONAL FAX SPECIFICATIONS

RECEIVING

SENDING

Super G3 Modem (33,600 bps)
3 Second Transmission Speed*
30 Page Auto Document Feeder (AR-SP2 option)
35 Rapid and Group Dial Keys
150 Speed Dial Keys
5 Program Keys
Auto Book Fax
Broadcasting to 200 Locations

350 Sheet Paper Capacity
(expandable to 850 sheets)

256 Halftone Levels
Out of Paper Reception
Automatic Reduction

MEMORY

2 MB Standard Memory
(expandable to 6MB)
Memory Transmit
Flash Memory

* Based on ITU-T Test Chart #1 at standard resolution excluding time for protocol signals (i.e., ITU-T phase C time only) sent at 33.6 Kbps. Transmission speeds will vary based on line type and conditions.

DOCUMENT
& NETWORK
SYSTEMS
OF AMERICA



SHARP ELECTRONICS CORPORATION
Document and Network Systems of America
Sharp Plaza, Mahwah, NJ 07430-2135
201-529-9600
www.sharp-usa.com



SHARP®

WWW.SHARP-USA.COM

SHARP®

SHARP AR-201 IMAGER. ADVANCED DIGITAL DOCUMENT SYSTEM

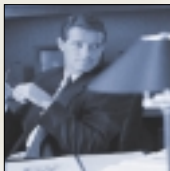
HIGH RESOLUTION

1200 DPI-QUALITY/PCL6

SUPER G3

33.6 KBPS FAX OPTION

NETWORK PRINTER OPTION



20 PAGE PER MINUTE

DIGITAL COPIER WITH
600 DPI OUTPUT

PRODUCTIVE SCAN ONCE,
PRINT MANY CAPABILITY

WIDE RANGE OF PAPER
SIZES INCLUDING 11" X 17"

COPY, PRINT, FAX ... THREE SOLUTIONS IN ONE RELIABLE SYSTEM.

The Sharp **AR-201** Digital IMAGER offers state-of-the-art, integrated office technology with three smart solutions in one – crisp digital copying with scan once – print many capability, advanced printing, and high-speed faxing. Taking advantage of the cost-efficient conventional supply system (separate toner, developer, and drum), the **AR-201** IMAGER can reduce your total cost of ownership.

The versatile digital copier includes advanced features like standard **Auto Image Rotation Copy, Offset Stacking, Electronic Sorting Upgrade**, and an optional Job Separation Tray. When you're ready for more, the **AR-201** IMAGER can become a powerful high resolution 1200 dpi-quality network printer offering a wide range of paper sizes including 11" x 17". Use the optional **Network Interface Card** to maximize the efficiency and productivity of your workgroup – delivering a range of output options right from your desktop. Plus, the optional **Fax Expansion Kit** turns the **AR-201** IMAGER into a Super G3 plain-paper laser fax, with a 3 second per page transmission and 33.6 modem speed.

The Sharp **AR-201** Digital IMAGER is the all-in-one solution for any growing business looking for a competitive advantage.

Digital
IMAGER™
Advanced Document System

AR-201

AR-201

SPECIFICATIONS

COPIER SPECIFICATIONS		FINISHING CAPABILITY	
TYPE	Digital copying machine, desktop	OFFSET STACKING	Offset stacking
COPY SYSTEM	Dry electrostatic transfer system	FUSING SYSTEM	Heat rollers
ORIGINALS	Sheets, bound documents	DEVELOPER SYSTEM	Magnetic brush development
ORIGINAL SIZE (MAX)	11" x 17"	LIGHT SOURCE	Xenon lamp
COPY SIZE (MIN/MAX)	Min. 5 1/2" x 8 1/2", Max. 11" x 17"	COPY RESOLUTION	Scan: 400 dpi/ Copy: 600 dpi
COPYING SPEED	20 copies per minute (8 1/2" x 11") 15 copies per minute (8 1/2" x 11"R) 12 copies per minute (8 1/2" x 14") 10 copies per minute (11" x 17")	GRADATION	256 levels
PRINT SPEED	20 pages per minute	REQUIRED POWER SUPPLY	AC 120V, 60 Hz, 11 amps
CONTINUOUS COPY	Max. 99 copies, subtractive counter	POWER CONSUMPTION	Max. 1.3 kW
FIRST COPY OUT TIME	7.2 seconds	WEIGHT	Approx. 69.9 lbs.
WARM UP TIME	35 seconds	DIMENSIONS	23.3" (w) x 21" (d) x 20.6" (h)
COPY RATIO	Variable: 50 - 200% in 1% increments Fixed presets: 50%, 64%, 77%, 95%, 100%, 121%, 129%, 141%, 200%	OPERATING CONDITIONS	Temperature: 59°F to 86°F (15°C to 30°C) Humidity: 20% to 85%
EXPOSURE SYSTEM	Moving optical source, slit exposure (stationary platen) with automatic exposure function	OPTIONAL EQUIPMENT	Single Pass Feeder (AR-SP2) Electronic Sorting Kit (AR-EB3) 250-Sheet Paper Feed Unit (AR-DE5) 500-Sheet Paper Feed Unit (AR-DE6) Facsimile Expansion Kit (AR-FX2) Printer Expansion Kit (AR-PB8) PS2 Expansion Kit (AR-PS1) Network Interface Card (AR-NC3D) LCD Panel Kit (AR-PA1) Job Separator Tray (AR-TR2) Platen Cover (AR-VR1)
COPY PAPER FEED	2 paper trays with auto paper feed (total: 500 sheets); 1 manual feed tray with 100 sheet automatic feed capacity		
ORIGINAL FEED SYSTEM	30 Sheet Single Pass Feeder (SPF) (option)		

OPTIONAL PRINT KIT SPECIFICATIONS	DESCRIPTION
PRINT KIT	AR-PB8 AR-PS1 (PostScript Expansion Kit)
RESOLUTION	1200 dpi equivalent with smoothing technology; 600 dpi; 300 dpi
COMPUTER INTERFACE	IEEE1321 bi-directional parallel port 10/100BaseT with AR-NC3D (option)
PAGE DESCRIPTION LANGUAGE	PCL5e/PCL6 Emulation; PostScript Level 2 Emulation (when optional AR-PS1 is installed)
PRINT DRIVER SUPPORT	Microsoft Windows 3.1/95/98; Macintosh OS 8.5 and above Windows NT 4.0, Windows 2000 (with AR-PS1 option)
RESIDENT FONTS	45 Outlines for PCL6 Emulation; 35 Outlines for PostScript2 Emulation (when optional AR-PS1 is installed)
MEMORY (STD/MAX)	8MB/136MB
MEMORY EXPANSION SLOTS	2 DIMM Slots
EXPANSION MEMORY	PC DIMM

Design and specifications are subject to change without notice.
Sharp is a registered trademark of Sharp Corporation. All trademarks and registered trademarks are the property of their respective holders.

OPTIONAL FAX SPECIFICATIONS	RECEIVING
SENDING	600 Sheet Paper Capacity (expandable to 1,100 sheets)
Super G3 Modem (33,600 bps)	256 Halftone Levels
3 Second Transmission Speed*	Out of Paper Reception
30 Page Auto Document Feeder (AR-SP2 option)	Automatic Reduction
35 Rapid and Group Dial Keys	MEMORY
150 Speed Dial Keys	2 MB Standard Memory (expandable to 6MB)
5 Program Keys	Memory Transmit
Auto Book Fax	Flash Memory
Broadcasting to 200 Locations	

* Based on ITU-T Test Chart #1 at standard resolution excluding time for protocol signals (i.e., ITU-T phase C time only) sent at 33.6 Kbps. Transmission speeds will vary based on line type and conditions.

DOCUMENT
& NETWORK
SYSTEMS
OF AMERICA



SHARP ELECTRONICS CORPORATION
Document and Network Systems of America
Sharp Plaza, Mahwah, NJ 07430-2135
201-529-9600
www.sharp-usa.com



SHARP®

WWW.SHARP-USA.COM

SHARP®

SHARP AR-207 IMAGER. ADVANCED DIGITAL DOCUMENT SYSTEM

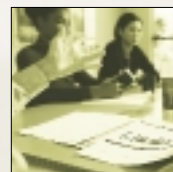
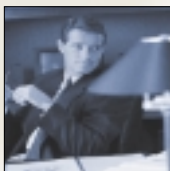
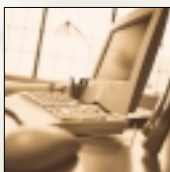
HIGH RESOLUTION

1200 DPI-QUALITY/PCL6

SUPER G3

33.6 KBPS FAX OPTION

NETWORK PRINTER OPTION



20 PAGE PER MINUTE

STANDARD AUTOMATIC
TRAYLESS DUPLEXING

STANDARD REVERSING
SINGLE PASS FEEDER

STANDARD ELECTRONIC SORTING

COPY, PRINT, FAX ... THREE SOLUTIONS IN ONE RELIABLE SYSTEM.

The Sharp **AR-207** Digital IMAGER offers state-of-the-art, integrated office technology with three smart solutions in one – crisp digital copying with scan once – print many capability, advanced printing, and high-speed faxing. Taking advantage of the cost-efficient conventional supply system (separate toner, developer, and drum), the **AR-207** IMAGER can reduce your total cost of ownership.

The versatile digital copier includes advanced features like standard **Auto Image Rotation Copy, Offset Stacking, Electronic Sorting Upgrade**, and an optional Job Separation Tray. When you're ready for more, the **AR-207** IMAGER can become a powerful high resolution 1200 dpi-quality network printer offering a wide range of paper sizes including 11" x 17". Use the optional **Network Interface Card** to maximize the efficiency and productivity of your workgroup – delivering a range of output options right from your desktop. Plus, the optional **Fax Expansion Kit** turns the **AR-207** IMAGER into a Super G3 plain-paper laser fax, with a 3 second per page transmission and 33.6 modem speed.

The Sharp **AR-207** Digital IMAGER is the all-in-one solution for any growing business looking for a competitive advantage.

Digital
IMAGER
Advanced Document System

AR -207

AR-207

SPECIFICATIONS

COPIER SPECIFICATIONS		FINISHING CAPABILITY	
TYPE	Digital copying machine, desktop		Offset stacking
COPY SYSTEM	Dry electrostatic transfer system	FUSING SYSTEM	Heat rollers
ORIGINALS	Sheets, bound documents	DEVELOPER SYSTEM	Magnetic brush development
ORIGINAL SIZE (MAX)	11" x 17"	LIGHT SOURCE	Xenon lamp
COPY SIZE (MIN/MAX)	Min. 5 1/2" x 8 1/2", Max. 11" x 17"	COPY RESOLUTION	Scan: 400 dpi/ Copy: 600 dpi
COPYING SPEED	20 copies per minute (8 1/2" x 11") 15 copies per minute (8 1/2" x 11"R) 12 copies per minute (8 1/2" x 14") 10 copies per minute (11" x 17")	GRADATION	256 levels
PRINT SPEED	20 pages per minute	REQUIRED POWER SUPPLY	AC 120V, 60 Hz, 11 amps
CONTINUOUS COPY	Max. 99 copies, subtractive counter	POWER CONSUMPTION	Max. 1.3 kW
FIRST COPY OUT TIME	7.2 seconds	WEIGHT	Approx. 69.9 lbs.
WARM UP TIME	35 seconds	DIMENSIONS	23.3" (w) x 21" (d) x 20.6" (h)
COPY RATIO	Variable: 50 – 200% in 1% increments Fixed presets: 50%, 64%, 77%, 95%, 100%, 121%, 129%, 141%, 200%	OPERATING CONDITIONS	Temperature: 59°F to 86°F (15°C to 30°C) Humidity: 20% to 85%
AUTOMATIC DUPLEX	Unlimited (trayless)	OPTIONAL EQUIPMENT	250-Sheet Paper Feed Unit (AR-DE5) 500-Sheet Paper Feed Unit (AR-DE6) Facsimile Expansion Kit (AR-FX2) Printer Expansion Kit (AR-PB8) PS2 Expansion Kit (AR-PS1) Network Interface Card (AR-NC3D) LCD Panel Kit (AR-PA1) Job Separator Tray (AR-TR2)
EXPOSURE SYSTEM	Moving optical source, slit exposure (stationary platen) with automatic exposure function		
COPY PAPER FEED	2 paper trays with auto paper feed (total: 500 sheets); 1 manual feed tray with 100 sheet automatic feed capacity		
ORIGINAL FEED SYSTEM	30 Sheet Reversing Single Pass Feeder (R-SPF) (standard)		

OPTIONAL PRINT KIT SPECIFICATIONS	DESCRIPTION
PRINT KIT	AR-PB8 AR-PS1 (PostScript Expansion Kit)
RESOLUTION	1200 dpi equivalent with smoothing technology; 600 dpi; 300 dpi
COMPUTER INTERFACE	IEEE 1284 bi-directional parallel port 10/100BaseT with AR-NC3D (option)
PAGE DESCRIPTION LANGUAGE	PCL5e/PCL6 Emulation; PostScript Level 2 Emulation (when optional AR-PS1 is installed)
PRINT DRIVER SUPPORT	Microsoft Windows 3.1/95/98; Macintosh OS 8.5 and above Windows NT 4.0, Windows 2000 (with AR-PS1 option)
RESIDENT FONTS	45 Outlines for PCL6 Emulation; 35 Outlines for PostScript2 Emulation (when optional AR-PS1 is installed)
MEMORY (STD/MAX)	8MB/136MB
MEMORY EXPANSION SLOTS	2 DIMM Slots
EXPANSION MEMORY	PC DIMM

Design and specifications are subject to change without notice.
Sharp is a registered trademark of Sharp Corporation. All trademarks and registered trademarks are the property of their respective holders.

OPTIONAL FAX SPECIFICATIONS	RECEIVING
SENDING	600 Sheet Paper Capacity (expandable to 1,100 sheets)
Super G3 Modem (33,600 bps)	256 Halftone Levels
3 Second Transmission Speed*	Out of Paper Reception
35 Rapid and Group Dial Keys	Automatic Reduction
150 Speed Dial Keys	MEMORY
5 Program Keys	2 MB Standard Memory (expandable to 6MB)
Auto Book Fax	Memory Transmit
Broadcasting to 200 Locations	Flash Memory

* Based on ITU-T Test Chart #1 at standard resolution excluding time for protocol signals (i.e., ITU-T phase C time only) sent at 33.6 Kbps. Transmission speeds will vary based on line type and conditions.

DOCUMENT
& NETWORK
SYSTEMS
OF AMERICA



SHARP ELECTRONICS CORPORATION
Document and Network Systems of America
Sharp Plaza, Mahwah, NJ 07430-2135
201-529-9600
www.sharp-usa.com



SHARP®

WWW.SHARP-USA.COM

CPD-3349